

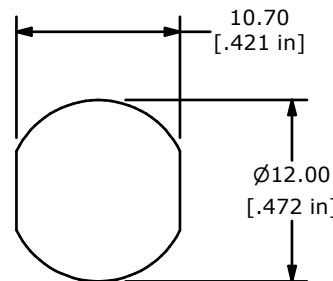
NOTES:

1. ALL DIMENSIONS IN MM[INCH]
2. GENERAL TOLERANCE: x.x= ± 0.4  
x.xx= ± 0.25
3. TERM. NOS. FOR REFERENCE ONLY.
4. RATING: 1A @125VAC, 0.5A @250VAC
5. CONTACT RESISTANCE: 20mΩ MAX.
6. DIELECTRIC STRENGTH: 1,500 V @SEA LEVEL

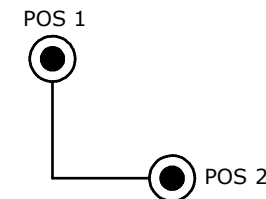
▲7. MATERIALS:

HOUSING: ZINC ALLOY W/CHROME PLATING  
CYLINDER: ZINC ALLOY W/CHROME PLATING  
TERMINAL AND CONTACTS: SILVER PLATED  
KEYS (2) KEY CODE 3026: STEEL, NICKEL PLATING

8. ▲ DENOTES CRITICAL PARAMETER.
9. 2002/95/EC (ROHS) COMPLIANT



RECOMENDED PANEL CUTOUT



CIRCUIT: SPDT  
CONTACT CONFIGURATION  
90° INDEXING

SWITCH FUNCTION	
POS 1	POS 2
↑	→
OFF	ON

LEGEND

● = INDICATES KEY PULL POSSIBLE



TITLE KO105A3026

A	21403	INITIAL RELEASE	3/12/14	EBP
REV	PCR NO	DESCRIPTION	DATE	BY

THE INFORMATION CONTAINED IN THIS DOCUMENT IS PROPRIETARY TO E-SWITCH AND IS NOT TO BE COPIED OR TRANSFERRED

SCALE	DATE 3/12/2014	DR EBP	DWG K100300	REV A
-------	-------------------	-----------	----------------	----------